



[atriadesigns.ca](http://atriadesigns.ca)  
604-428-1818  
[sales@atriadesigns.ca](mailto:sales@atriadesigns.ca)

FORTELLO®

The windproof garden parasol



**Glatz** 

# FORTELLO®



<b>Frame</b>	8 parts Two-part profiled mast 67 × 3 mm Opposite opening principle for easy opening Runner and crown made from robust die-cast aluminium Screws and rivets made from stainless steel Canopy self-tensing through flexible rib ends Frame roof: round, square, rectangular
<b>Frame colour</b>	Natural anodised aluminium
<b>Canopy</b>	Fabric quality 5: polyacrylic, 300 g/m <sup>2</sup> , UV protection > 98 % Fabric quality 4: polyester, 250 g/m <sup>2</sup> , UV protection > 98 % Fabric quality 2: polyester, 220 g/m <sup>2</sup> , UV protection > 98 %
<b>Flounce</b>	Only available without
<b>Protective cover</b>	Can be ordered as an optional extra
<b>Electrical accessories</b>	Osyriion Spot LED with integrated battery pack



Using Locations



Fixations



FORTELLO®  
© Int. Design reg.



Swiss  
Design

# Assortment

	Nominal size without flounce	Number of ribs	Order no. without LED
○	cm Ø 400	8 parts	325 00 400 171
□	300×300	8 parts	325 00 301 171
	350×350	8 parts	325 00 351 171
	400×400	8 parts	325 00 401 171
□	400×300	8 parts	325 00 402 171

Nominal size	Lateral distance	Mast Ø	Area covered	Height closed	Clear headroom	Total height	Height open	Foundation	Minimum weight for base	max. wind speed open perm.
cm	cm	cm	m <sup>2</sup>	cm	cm	cm	cm	cm	kg	km/h (Bft.)
A	AS	M	B	E	F	G	H	C		
Ø 400	370	6.7	11.3	135	215	345	280	80×80	120	80 (9)
300×300	-	6.7	9	125	215	345	270	80×80	120	90 (10)
350×350	-	6.7	12.3	110	215	365	280	80×80	120	80 (9)
400×400	-	6.7	16.0	95	215	385	290	100×100	180	70 (8)
400×300	-	6.7	12	130	215	375	290	80×80	120	80 (9)

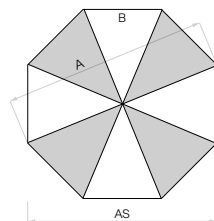
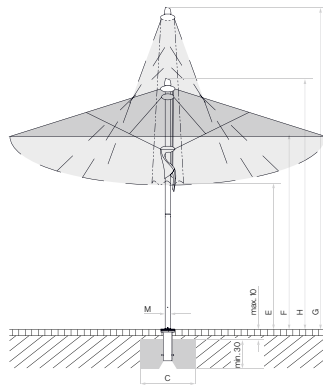
The listed measures represent extrapolated average values that may be slightly different on the product ( $\pm 2\% \pm 5$  cm).

The height dimensions are based on the ground socket M4. With the base M4, 120 kg these vary by plus 11.5 cm and with the base M4, 180 kg by plus 15.5 cm.

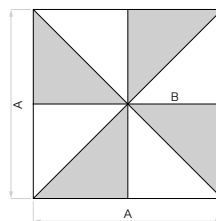
Using PX ground socket with adapter on M4 leaves an additional 10.5 cm.

The max. wind speed limits as per our separate list apply only in the presence of a fix ground anchorage.

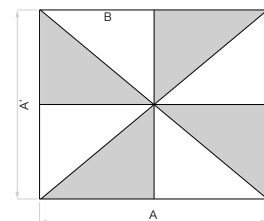
In the presence of several parasols, the minimum distance between one parasol and another and between parasols and walls shall be 20 cm.



8 parts



8 parts



8 parts

Loose cover max. 10 cm, concrete thickness  
min. 30 cm (pay attention to frost depth), Guarantee  
water drainage

## Accessories

**Absolutely  
necessary**

**Order no.**

### Protective cover made of coated, tear-resistant polyester fabric

1	Protective cover with zip and rod		350 01 609 701
---	-----------------------------------	--	----------------

### Electrical accessories

2	OSYRION Spot LED battery-powered light, set of 2, with remote control, including charger		350 01 563 000
3	OSYRION Spot LED battery-powered light, set of 4, with remote control, including charger		350 01 563 100

## Fixations

### Ground sockets

4	Ground socket PX, galvanised steel	Adapter PX to M4 + support tube M4, P+	350 01 207 001
5	Ground socket M4, galvanised steel	Support tube M4	350 01 226 510

### Adapters

6	Adapter PX to M4	Support tube M4, P+	350 01 221 800
---	------------------	---------------------	----------------

### Mounting plates

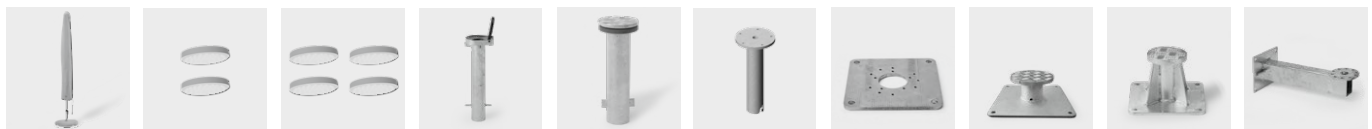
7	Mounting plate M4 / M8, 30 × 30 × 1.5 cm, galvanised steel	Support tube M4	350 01 226 921
8	Mounting plate M4 special, for installation height 50–149 mm, galvanised steel	Support tube M4	350 01 226 932
9	Mounting plate M4 special, for installation height 150–350 mm, galvanised steel	Support tube M4	350 01 226 930
	Mounting plate M4 for isolated grounds, installation height made to measure, high-grade steel 1.4301 / 304	Support tube M4	350 01 229 730

### Wall consoles

10	Wall console M4, extension 480 mm, galvanised steel	Support tube M4	350 01 229 405
11	Wall console M4, extension 100 mm, galvanised steel	Support tube M4	350 01 229 410

### Bases

12	Base frame M4, 120 kg, (for 8 plates 40 × 40 × 4 cm), 91 × 91 × 11.5–15.5 cm, galvanised steel, adjustable and levellable (price without plates)	Support tube M4	350 01 108 235
	Slab set, 8 pieces, 40 × 40 × 4 cm, (approx. 110 kg), concrete		350 01 226 908
	Slab set, 8 pieces, 40 × 40 × 4 cm, (approx. 115 kg), 4 pieces concrete, 4 pieces in granite-look		350 01 226 909
13	Cover for M4 base 120 kg, 96 × 96 × 11.5 cm, plastic ABS coated, anodised aluminium look		350 01 100 617
14	Cover for M4 base 120 kg, 96 × 96 × 11.5 cm, plastic ABS coated, anthracite		350 01 100 630
12	Base frame M4, 180 kg, (for 12 plates 40 × 40 × 4 cm), 91 × 91 × 15.5–19.5 cm, galvanised steel, adjustable and levellable (price without plates)	Support tube M4	350 01 108 335
	Slab set, 12 pieces, 40 × 40 × 4 cm, (approx. 165 kg), concrete		350 01 226 907
	Slab set, 12 pieces, 40 × 40 × 4 cm, (approx. 170 kg), 8 pieces concrete, 4 pieces in granite-look		350 01 226 906
13	Cover for M4 base 180 kg, 96 × 96 × 15 cm, plastic ABS coated, anodised aluminium look		350 01 100 717
14	Cover for M4 base 180 kg, 96 × 96 × 15 cm, plastic ABS coated, anthracite		350 01 100 730
	<sup>38</sup> Set of castors for base M4 120 kg / 180 kg, (maximum weight 240 kg), Ø 5 cm, H = 5.5 cm, galvanised steel		350 01 100 500



1 2 3 4 5 6 7 8 9 10



11 12 13 14

## Fixations

**Absolutely  
necessary**

**Order no.**

### Bases with castors

15	<sup>3</sup> Base frame with castors M4, 120 kg, 80×80×14.6 cm, galvanised steel, matt white, frame approx. 30 kg (without decorative plate) <b>NEW</b>	Weight Set + Support tube M4 + Decorative plate	350 01 110 410
15	<sup>3</sup> Base frame with castors M4, 120 kg, 80×80×14.6 cm, galvanised steel, anthracite, frame approx. 30 kg (without decorative plate) <b>NEW</b>	Weight Set + Support tube M4 + Decorative plate	350 01 110 420
	Weight Set for base with castors M4, 120 kg, 4 pieces, concrete, (Weight Set approx. 90 kg) <b>NEW</b>		350 01 110 500
	Decorative plate in grey for base with castors M4, 120 kg, plastic <b>NEW</b>		350 01 110 610
	Decorative plate in anthracite for base with castors M4, 120 kg, plastic <b>NEW</b>		350 01 110 620
	Decorative plate in sand for base with castors M4, 120 kg, plastic <b>NEW</b>		350 01 110 630
16	<sup>3</sup> Natural granite base M4, 120 kg, 90×90×17 cm, natural stone, with castors	Support tube M4	350 01 109 475
17	<sup>1,3</sup> Base frame with castors M4, 150 kg, 80×80×14 cm, galvanised steel	Support tube M4	350 01 103 000
	<sup>1</sup> Cast concrete decor weights set, 4 pieces 25101104500 (approx. 125 kg) for 350 01 103 000		350 01 103 100
15	<sup>3</sup> Base frame with castors M4, 180 kg, 94×94×14.6 cm, galvanised steel, matt white, frame approx. 30 kg (without decorative plate) <b>NEW</b>	Weight Set + Support tube M4 + Decorative plate	350 01 110 710
15	<sup>3</sup> Base frame with castors M4, 180 kg, 94×94×14.6 cm, galvanised steel, anthracite, frame approx. 30 kg (without decorative plate) <b>NEW</b>	Weight Set + Support tube M4 + Decorative plate	350 01 110 720
	Weight Set for base with castors M4, 180 kg, 4 pieces, concrete, (Weight Set approx. 150 kg) <b>NEW</b>		350 01 110 800
	Decorative plate in grey for base with castors M4, 180 kg, plastic <b>NEW</b>		350 01 110 910
	Decorative plate in anthracite for base with castors M4, 180 kg, plastic <b>NEW</b>		350 01 110 920
	Decorative plate in sand for base with castors M4, 180 kg, plastic <b>NEW</b>		350 01 110 930

### Support tubes/transition tubes

18	Support tube M4, P <sup>6</sup> , galvanised steel		350 01 200 235
----	--	--	----------------

<sup>1</sup> while stocks last

<sup>3</sup> only suitable for smooth, joint free surface coverings

<sup>6</sup> Not suitable for cover for M4 base



15

16

17

18



Glatz AG  
Parasols  
2023 Season

[glatz.com](http://glatz.com)

