



premier outdoor living • solar shading • architectural design products

# **PRODUCT CATALOGUE**

## **2026**

[www.atriadesigns.ca](http://www.atriadesigns.ca)



# INDEX

*This is an interactive PDF. Click on the headings to go to the desired section or product.*



## OUTDOOR LIVING SOLUTIONS

CUSTOM OUTDOOR ROOMS

LOUVERED ALUMINUM PERGOLAS (FIXED & MOTORIZED)

HARD-TOP PERGOLAS

RETRACTABLE PVC PERGOLAS

RETRACTABLE AWNINGS (SOLAR-POWERED & MOTORIZED)

GLASS ROOF PERGOLAS

GLASS ENCLOSURES

VINYL SCREENS

UMBRELLAS

SHADE SAILS

PATIO HEATERS

## SOLAR SHADING SOLUTIONS

EXTERIOR SHADES & ROOF BLINDS (MOTORIZED & MANUAL)

SOLAR-POWERED SCREENS

PATIO SCREENS (MOTORIZED & MANUAL)

SLIDING SHUTTERS & PANELS

VERTICAL BRISE-SOLEIL (FIXED & MOTORIZED)

HORIZONTAL BRISE-SOLEIL (FIXED & MOTORIZED)

## ARCHITECTURAL DESIGN SOLUTIONS

ALUMINUM CLADDING SYSTEMS

# INDEX

*This is an interactive PDF. Click on the headings to go to the desired section or product.*



## COMPANY

FEATURED PROJECTS

AIBC & IDCEC COURSE

TECHNICAL SUPPORT

WHAT WE STAND FOR

SUSTAINABILITY



# CUSTOM OUTDOOR ROOMS

Luxury custom outdoor rooms with year-round protection. Architectural designs, premium materials & seamless indoor-outdoor integration.

*amani*  
BY RENSON



archiproducts  
AWARDS  
WINNER



**MORE INFORMATION:**

**WEBSITE PAGE**



**REQUEST A QUOTE:**

**CONTACT US**



**BRANDS WE WORK WITH:**

**RENSON [BELGIUM]**

**WINSOL [BELGIUM]**



# LOUVERED ALUMINUM PERGOLAS (FIXED & MOTORIZED)

Customizable bioclimatic louvered pergolas with weather automation. Adjustable or fixed aluminum louvers for dynamic sun & rain control. Many accessory options.



[OUTDOOR - BACK TO INDEX](#)

**MORE INFORMATION:**

[WEBSITE PAGE](#)



**REQUEST A QUOTE:**

[CONTACT US](#)



**BRANDS WE WORK WITH:**

RENSON [BELGIUM]

PRATIC [ITALY]

WINSOL [BELGIUM]



# HARD TOP PERGOLAS

Permanent aluminum hard-top pergolas with full weatherproofing. Low-maintenance, durable design for year-round outdoor entertaining.



[OUTDOOR - BACK TO INDEX](#)

**MORE INFORMATION:**

**WEBSITE PAGE**



**REQUEST A QUOTE:**

**CONTACT US**



**BRANDS WE WORK WITH:**

RENSON [BELGIUM]

CUBRICS [CANADA]



# RETRACTABLE PVC PERGOLAS

Premium retractable PVC canopy pergolas. Motorized, waterproof protection with optional integrated lighting, heating & custom finishes.



[OUTDOOR - BACK TO INDEX](#)

**MORE INFORMATION:**

**WEBSITE PAGE**



**REQUEST A QUOTE:**

**CONTACT US**



**BRANDS WE WORK WITH:**

RENSON [BELGIUM]

PRATIC [ITALY]

ALPHA [GREECE]



# RETRACTABLE AWNINGS (SOLAR-POWERED & MOTORIZED)

Solar-powered & motorized retractable awnings for efficient UV protection. Custom sizing, many fabric options & additional accessories for comfort.



[OUTDOOR - BACK TO INDEX](#)

**MORE INFORMATION:**

[WEBSITE PAGE](#)



**REQUEST A QUOTE:**

[CONTACT US](#)



**BRANDS WE WORK WITH:**

PRATIC [ITALY]

STOBAG [SWITZERLAND]

WINSOL [BELGIUM]

# GLASS ROOF PERGOLAS

Architectural glass roof pergolas for premium outdoor living. UV-resistant panels, optional motorization & weatherproof elegance.



[OUTDOOR - BACK TO INDEX](#)

**MORE INFORMATION:**

**WEBSITE PAGE**



**REQUEST A QUOTE:**

**CONTACT US**



**BRANDS WE WORK WITH:**

PROTEZIONI [ITALY]

WINSOL [BELGIUM]



# GLASS ENCLOSURES

Frameless glass enclosures for pergolas & patios. Panoramic views with year-round weather protection. Sliding or fixed configurations.



[OUTDOOR - BACK TO INDEX](#)

**MORE INFORMATION:**

[WEBSITE PAGE](#)



**REQUEST A QUOTE:**

[CONTACT US](#)



**BRANDS WE WORK WITH:**

PROTEZIONI [ITALY]

RENSON [BELGIUM]

MIBA [GREECE]



# VINYL SCREENS

Modular bioclimatic pergola with rotating and retractable aluminum blades and optional integrated side elements. Modular bioclimatic pergola with rotating and



[OUTDOOR - BACK TO INDEX](#)

**MORE INFORMATION:**

[WEBSITE PAGE](#)



**REQUEST A QUOTE:**

[CONTACT US](#)



**BRANDS WE WORK WITH:**

**ZIPTRAK [AUSTRALIA]**



# UMBRELLAS

Commercial-grade patio umbrellas available: center pole, side pole or wall mounted.  
UV-resistant fabrics, multiple mounting & design options. Durable outdoor shade.



**MORE INFORMATION:**

**WEBSITE PAGE**



**REQUEST A QUOTE:**

**CONTACT US**



## **BRANDS WE WORK WITH:**

GLATZ [SWITZERLAND]

UMBROSA [BELGIUM]

GAGGIO [ITALY]

PROSTOR [BELGIUM]

BAHAMA [GERMANY]

HEATSAIL [BELGIUM]



# SHADE SAILS

Architectural tensile shade sails in custom sizes. UV-resistant, waterproof fabric for modern residential & commercial sun protection.



[OUTDOOR - BACK TO INDEX](#)

**MORE INFORMATION:**

**WEBSITE PAGE**



**REQUEST A QUOTE:**

**CONTACT US**



**BRANDS WE WORK WITH:**

UMBROSA [BELGIUM]

BAHAMA [GERMANY]

SHADE SAILS [CANADA]



# PATIO HEATERS

Professional gas & electric patio heaters. Energy-efficient outdoor heating solutions.  
Wall-mount, freestanding & portable models.



[OUTDOOR - BACK TO INDEX](#)

**MORE INFORMATION:**

**WEBSITE PAGE**



**REQUEST A QUOTE:**

**CONTACT US**



**BRANDS WE WORK WITH:**

**BROMIC [AUSTRALIA]**

**HEATSAIL [BELGIUM]**

# EXTERIOR SHADES & ROOF BLINDS (MOTORIZED & MANUAL)

Motorized exterior window shades with weather automation. Reduce cooling costs, prevent overheating & protect interiors. Vertical, horizontal, incline & corner applications.



**FIXSCREENS REGULATE SOLAR  
HEAT AND PREVENT  
OVERHEATING**  
External sun protection cools  
down interiors by 10°C



**MORE INFORMATION:**

**WEBSITE PAGE**



**REQUEST A QUOTE:**

**CONTACT US**



**BRANDS WE WORK WITH:**  
RENSON [BELGIUM]



# SOLAR-POWERED EXTERIOR SHADES & ROOF BLINDS

Solar-powered motorized screens with battery backup. Wireless installation, weather automation & eco-friendly sun protection. Vertical, horizontal & incline applications.



**FIXSCREENS REGULATE SOLAR  
HEAT AND PREVENT  
OVERHEATING**  
External sun protection cools  
down interiors by 10°C



[SOLAR SHADING - BACK TO INDEX](#)

**MORE INFORMATION:**

**WEBSITE PAGE**



**REQUEST A QUOTE:**

**CONTACT US**



**BRANDS WE WORK WITH:**

**RENSON [BELGIUM]**

# PATIO SCREENS (MOTORIZED & MANUAL)

Motorized retractable patio screens with high wind tolerance. Vertical, horizontal & incline applications. UV protection & privacy.



[SOLAR SHADING - BACK TO INDEX](#)

**MORE INFORMATION:**

[WEBSITE PAGE](#)



**REQUEST A QUOTE:**

[CONTACT US](#)



**BRANDS WE WORK WITH:**

**RENSON [BELGIUM]**



# SLIDING SHUTTERS & PANELS

Architectural sliding panels with FlexGuide technology. Aluminum or wood construction. Dynamic sun control with multiple track configurations.



[SOLAR SHADING - BACK TO INDEX](#)

**MORE INFORMATION:**

**WEBSITE PAGE**



**REQUEST A QUOTE:**

**CONTACT US**



**BRANDS WE WORK WITH:**

**RENSON [BELGIUM]**



# VERTICAL BRISE-SOLEIL (FIXED & MOTORIZED)

Vertical brise-soleil systems for building facades. Fixed or motorized aluminum louvers. Dynamic sun control with architectural appeal.



[SOLAR SHADING - BACK TO INDEX](#)

**MORE INFORMATION:**

**WEBSITE PAGE**



**REQUEST A QUOTE:**

**CONTACT US**



**BRANDS WE WORK WITH:**

**RENSON [BELGIUM]**



# HORIZONTAL BRISE-SOLEIL (FIXED & MOTORIZED)

Horizontal brise-soleil systems with adjustable louvers. Integrated into building design. Static or dynamic solar shading for facades.



[SOLAR SHADING - BACK TO INDEX](#)

**MORE INFORMATION:**

**WEBSITE PAGE**



**REQUEST A QUOTE:**

**CONTACT US**



**BRANDS WE WORK WITH:**

**RENSON [BELGIUM]**



# ALUMINUM CLADDING SYSTEMS (VERTICAL & HORIZONTAL PROFILES)

Tailored, modern facade solutions with robust construction. Optional lighting and wooden strips. Many profiles & colours available, including wood design options.



ARCHITECTURAL DESIGN - [BACK TO INDEX](#)

**MORE INFORMATION:**

**WEBSITE PAGE**



**REQUEST A QUOTE:**

**CONTACT US**



**BRANDS WE WORK WITH:**

**RENSON [BELGIUM]**

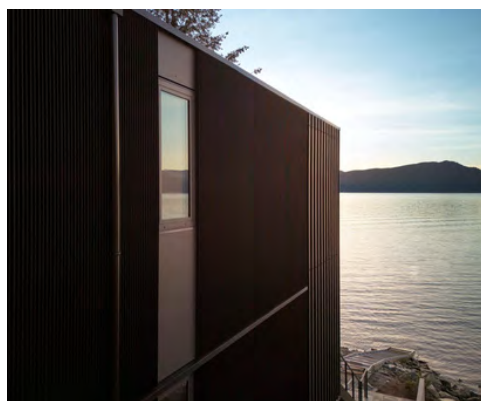
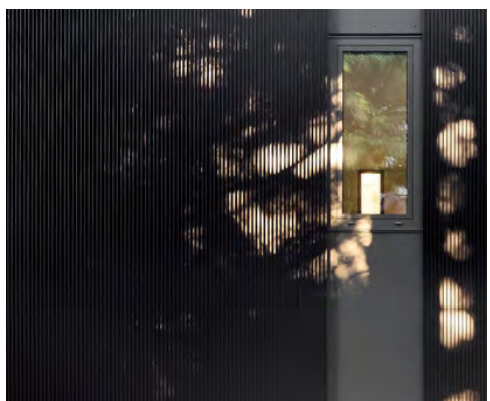
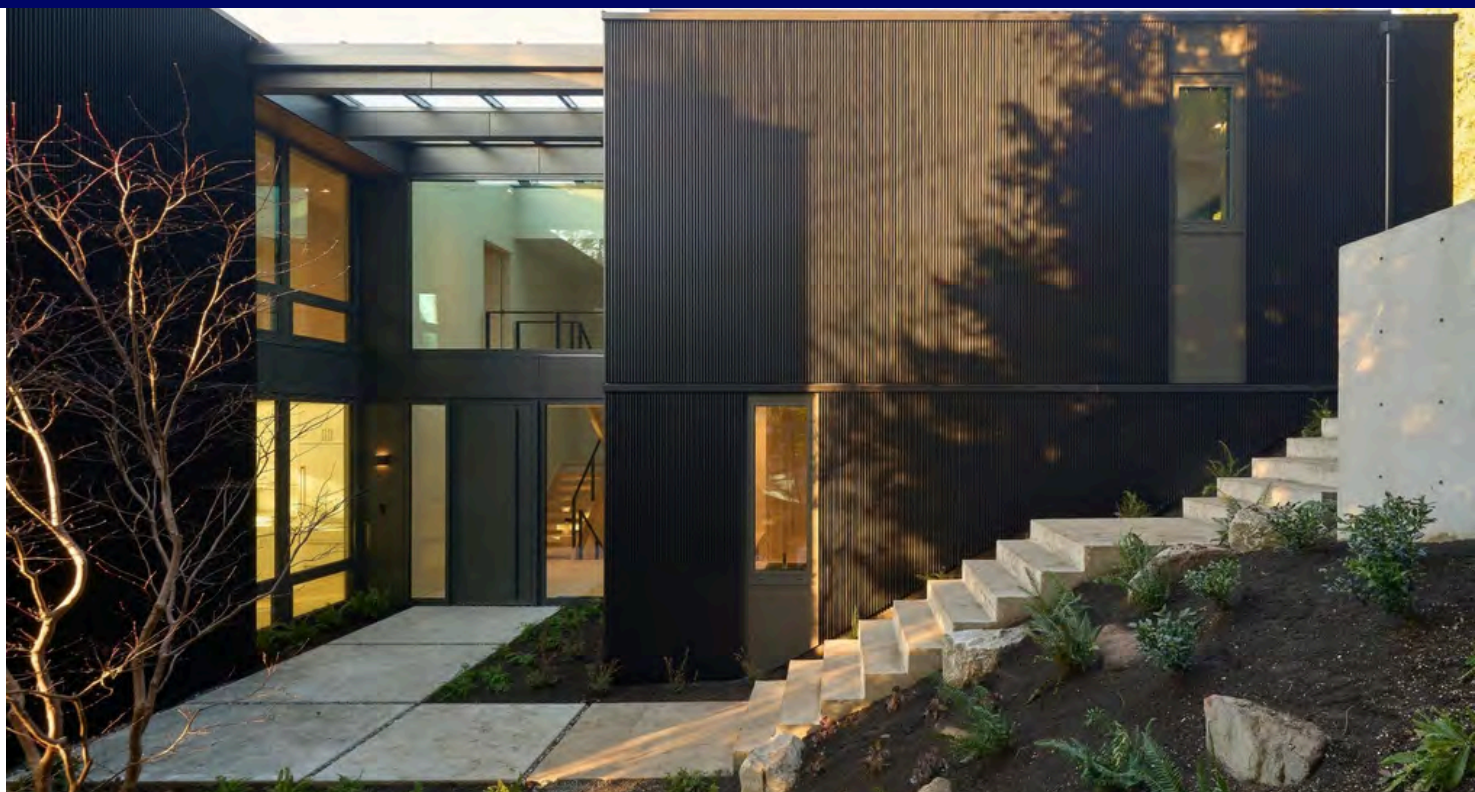


PORTFOLIO | RESIDENTIAL

## HOWE SOUND HOUSE

### SCOPE

At Howe Sound House in West Vancouver, we installed the Renson Linarte vertical cladding system to enhance the home's modern architecture. Ocean-treated, powder-coated aluminum profiles were applied across exterior walls, entryways, and elevations for a unified façade. Designed for coastal durability and low maintenance, the system wraps seamlessly around transitions while maintaining consistent design language. This installation delivers weather resistance, flexibility, and lasting value—bringing the homeowner's vision to life.

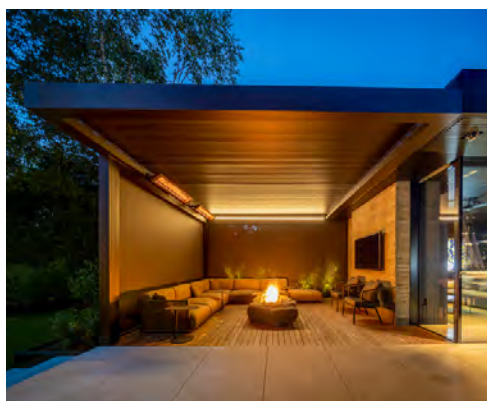




## RADIANCE

### SCOPE

At Radiance, a private Vancouver home, we installed two Renson Camargue motorized pergolas and two Pratic T Hide retractable awnings to create a versatile outdoor living space. The first pergola features motorized louvers, screens, LED lighting, and Bromic heaters for year-round comfort. The second, wall-mounted above the outdoor kitchen, includes a custom louvered wall. The Pratic awnings offer flexible sun protection with motorized operation, lighting, and drop-down valances—redefining residential outdoor living with style and functionality.





## THE STACK

### SCOPE

At The Stack in Vancouver, we transformed the building's rooftop terraces into exceptional outdoor spaces that match its world-class architectural vision. We installed multiple Renson Camargue motorized pergolas featuring integrated LED lighting and motorized louvers—creating flexible, year-round amenity areas for tenants. These systems provide adjustable weather protection while maintaining the building's modern aesthetic. Our installation enhances The Stack's commitment to innovative design and sustainable excellence, delivering functional outdoor environments that adapt to Vancouver's climate.





## ELISA STEAKHOUSE

### SCOPE

Our team installed 3 custom Camargue patio covers, equipped with weather protection screens and heaters. These integrated screens feature crystal windows, ensuring guests can enjoy the patio year-round without sacrificing their view of Yaletown's vibrant street life. The Camargue louvred pergola seamlessly complements Elisa's aesthetic with its top-notch finish and minimalist, elegant design.





## PURE BLISS

### SCOPE

Set on a hill, this home now features an impressive outdoor space that extends from the grand kitchen. We installed two Camargue pergolas with integrated crystal-clear screens, plus a third pergola over the BBQ area. The result is a versatile and inviting area where the owners can comfortably enjoy their outdoor space, protected from sun, rain, and insects.





## ARBUTUS CLUB

### SCOPE

At the Arbutus Club, The Bistro's outdoor patio overlooks the pool and tennis courts. To ensure year-round comfort for guests, we installed three Camargue louvered bioclimatic pergolas with lighting and heating. The space is enclosed with a fixed tempered glass wall on one side and sliding glass doors on three sides, with a retractable screen on the south side to block intense sunlight. This provides a versatile, weather-protected patio where guests can enjoy the outdoor ambiance in any season.





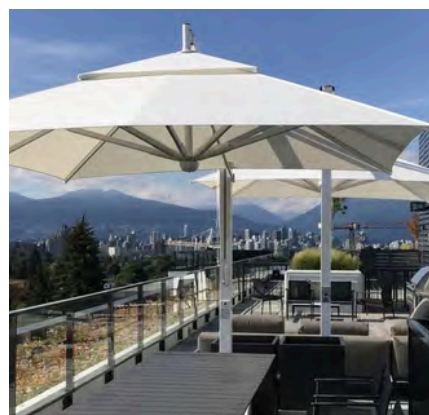
## CACTUS CLUB, VERNON

### SCOPE

Driven by Cactus Club Restaurants' dedication to an exceptional dining experience, the goal was to create an adaptable outdoor space, ensuring comfort regardless of weather conditions. The challenge was to provide shelter from the sun, wind, and rain while maintaining an optimal temperature. To meet these needs, we chose Renson Fixscreen Freestanding, a solution that provides functionality and aesthetics.







**SEE ALL PROJECTS**

website page





# COURSES FOR ARCHITECTS & DESIGNERS



## Earn AIBC & IDCEC Continuing Education Credits

Atria Designs is a registered continuing education provider and offers professional development webinars. We offer both group and individual webinars as requested.

Explore our currently offered online courses and book a course for yourself or your team:

[website page](#)



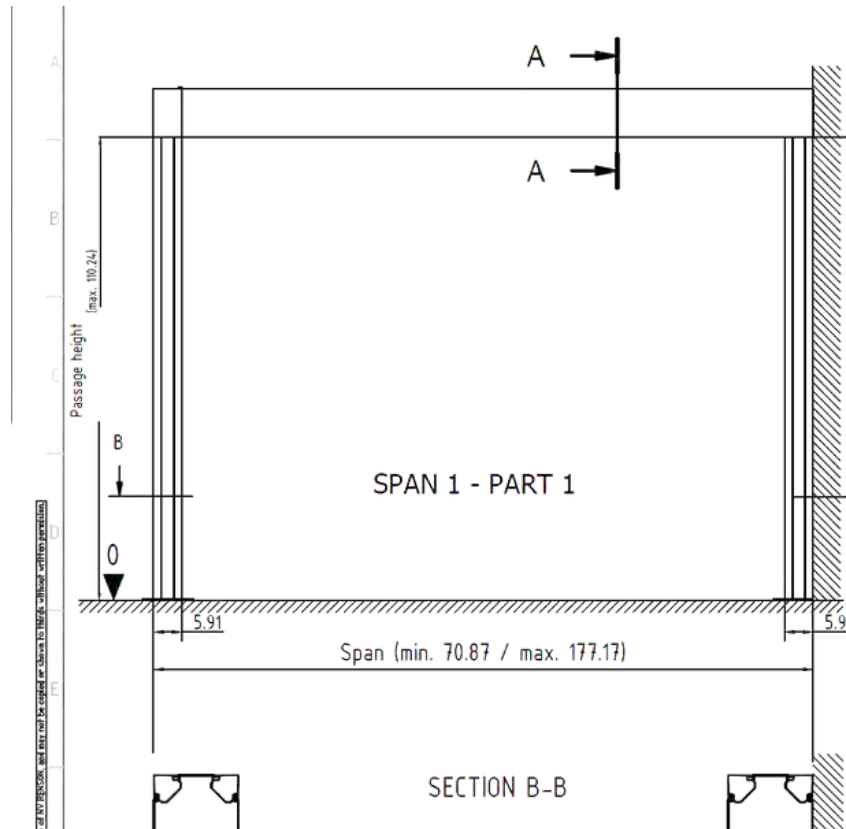
If you would like to book an online or in-person presentation without the need for learning credits, please contact

[education@atriadesigns.ca](mailto:education@atriadesigns.ca).



# WE PROVIDE STRONG TECHNICAL SUPPORT

AutoCAD, BIM, Sketch Up files, detailed specs, certifications,  
and more.







WE CARE



WE INNOVATE



WE DELIVER

# WHAT WE STAND FOR



## Top quality & durability

We only represent manufacturers that push for the highest quality standards across the global market and maximum lifespan & durability of their products. Additionally, all products we carry are tested and certified by our manufacturer's engineers.



## Minimalist design & tailored solutions

All products are tailor made to your application and design needs. We offer varying installation applications, precise sizing (to the mm) with many of our products and a wide array of customization options.



## Many years of experience & global recognition

The manufacturers we work with have many years of experience in their respective field and have a strong global presence. This adds to the credibility of the products we offer & expands the range of projects we can undertake.



## User friendly & low maintenance

All of our products are designed to be user friendly and require low maintenance, retaining their characteristics for many years, day in and day out, under all weather conditions.



## Continuous innovation

All of our manufacturers have an extensive investment in R&D and a tight network of experts who are continuously innovating.



## Client support

Our manufacturers offer an excellent, transparent & honest support system (which allows us to better support our clients). They also have drawings and studies openly available to provide.



## **SMALL STEPS FOR A BETTER LIFE**

At Atria Designs, we believe that sustainability starts with small, thoughtful choices. Living comfortably means creating spaces that not only serve the present but also protect the planet for future generations. That's why we partner with manufacturers that are dedicated to innovation and sustainability—investing in net-zero emission facilities, recyclable materials, and energy-efficient solutions.

Our products reflect this commitment, offering smart designs that enhance both indoor and outdoor environments while minimizing environmental impact.

Together, we can build a healthier, more sustainable world, one thoughtful step at a time.





[www.atriadesigns.ca](http://www.atriadesigns.ca)

604-428-1818

[sales@atriadesigns.ca](mailto:sales@atriadesigns.ca)